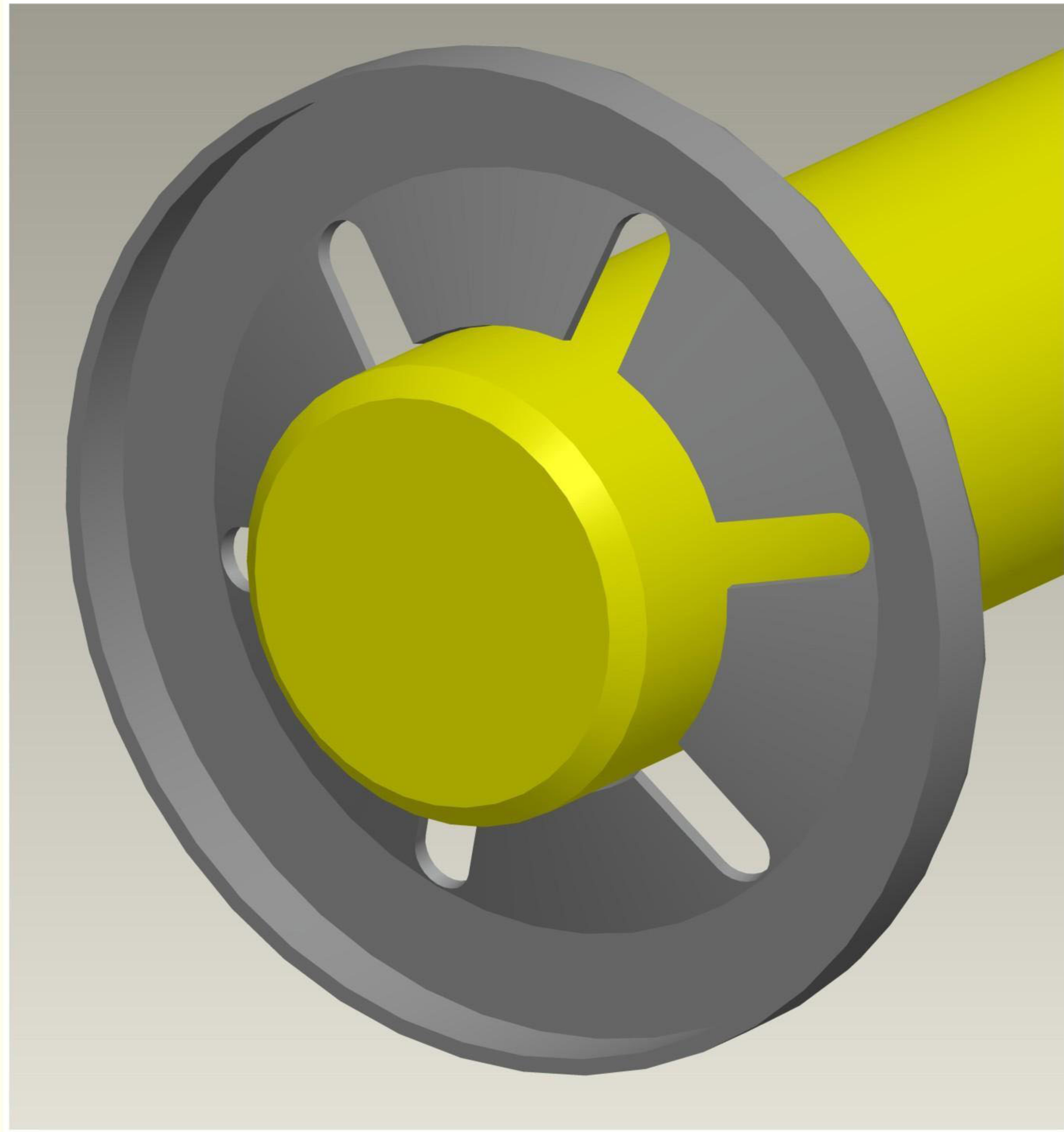
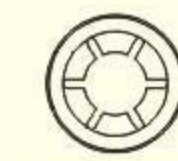


# UNIPUSH-ON

## SHEET METAL FASTENERS



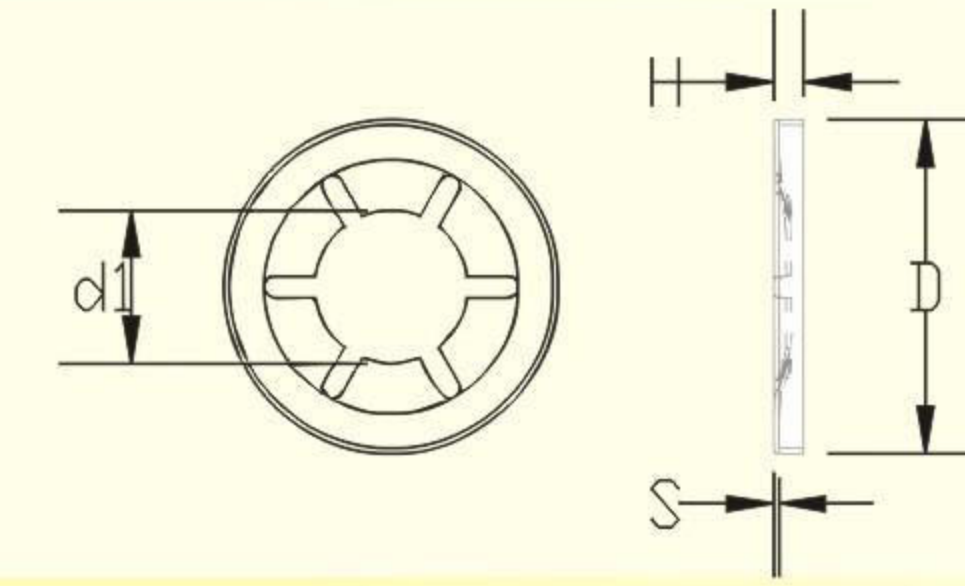
email to : [sales@unipushon.com](mailto:sales@unipushon.com)



# UNIPUSH-ON

### MATERIAL

- A) SPRING STEEL with black oxide coating
- B) SPRING STEEL with electroplating in trivalent blue passivation.
- C) SPRING STEEL with mechanical plating.
- D) SPRING STEEL with zinc aluminium flake coating ( DELTA TONE)
- E) STAINLESS STEEL



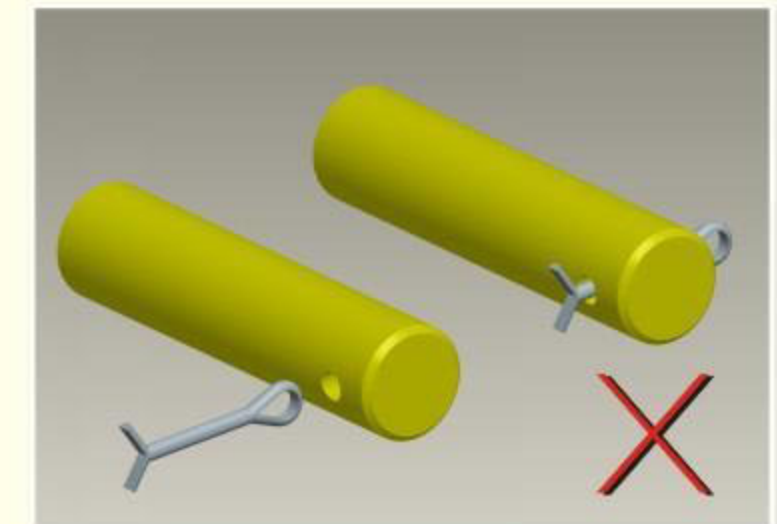
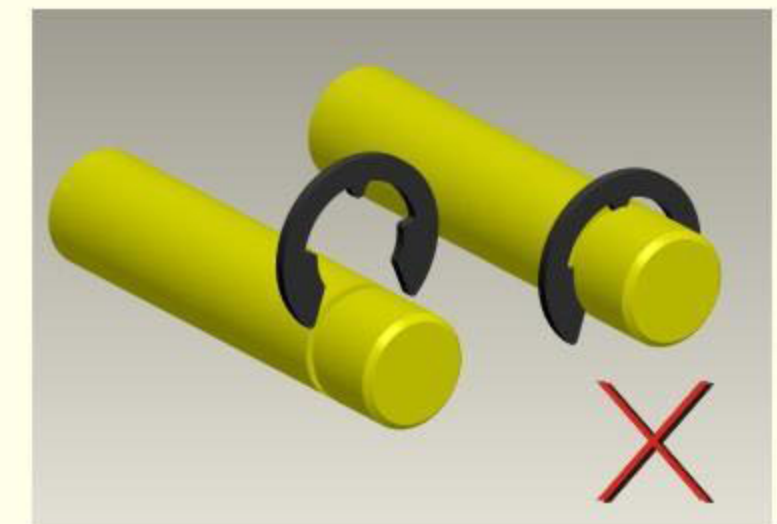
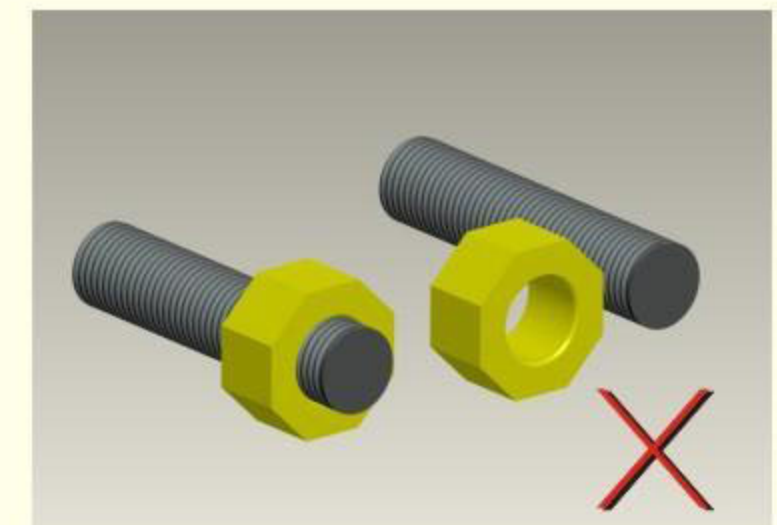
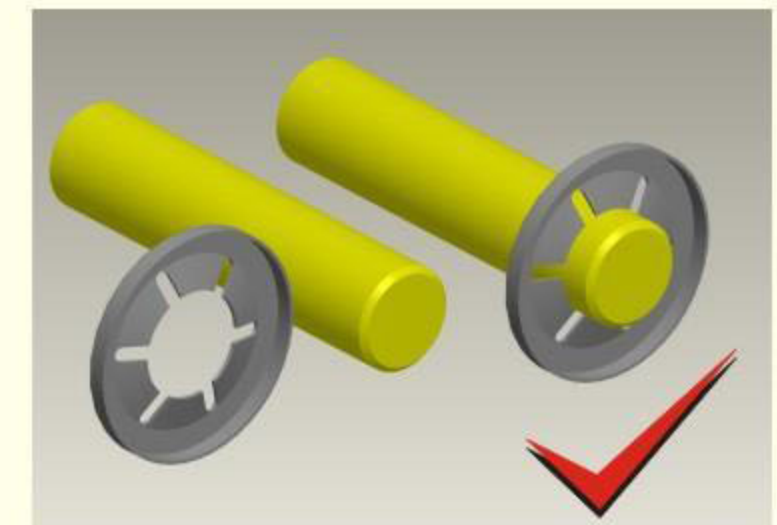
### Ordering information :-

001-(SHAFT SIZE) -(SURFACE FINISH CODE)

for eg :- if you want to order for shaft 2mm with black oxide coating

write 001-(2.0)-(A)

shaft-Ø d [mm]	Inner dia-Ø d <sub>1</sub> [mm]	outer dia-Ø D ±0.3	height H ±0.2	thickness S [mm]	number of slots	push-off load [N]
2.0	1.61 - 1.84	9.7	1.3	0.20	4	200
3.0	2.58 - 2.81	9.7	1,3	0,20	4	200
4.0	3.57 - 3.80	11,5	1,3	0,20	5	400
5,0	4,51 - 4,74	11,5	1,3	0,20	5	400
6,0	5,45 - 5,70	15,3	1,3	0,25	6	800
7,0	6,46 - 6,72	15,3	1,3	0,25	6	800
8,0	7,40 - 7,66 -	15,3	1,3	0,25	6	800
9,0	8,50 - 8,75	18,4	1,9	0,30	6	1000
10,0	9,49 - 9,74	18,4	1,9	0,30	6	1000
12,0	11,37 - 11,62	25,0	2,3	0,40	6	2500
13,0	12,38 - 12,64	25,0	2,3	0,40	6	2500
14,0	13,40 - 13,66	28,2	2,3	0,40	6	2500
15,0	14,43 - 14,68	28,2	2,3	0,40	6	2500
18,0	17,34 - 17,62	36,5	3,0	0,40	9	3500
20,0	19,30 - 19,63	36,5	3,0	0,40	9	3500



### APPLICATION :-

UNIPUSH-ON Lock washers are designed for applications where a quick, permanent & secure assembly is required to retain plain shafts of SOFT STEEL, NON FERROUS METALS, PLASTICS etc. by using our lock washers you can save on costly secondary operations like GROOVING, CROSS HOLE DRILLING, THREADING etc. once assembled these lock washers are so secure that they can only be removed by destruction.

A FEW APPLICATIONS WHERE UNIPUSH- ON LOCK WASHERS CAN BE USED :-

- 1 AUTOMOTIVE SEAT ASSEMBLIES.
- 2 SECURING CAR LOGOS.
- 3 SECURING THREADED STUDS.

FOR A SAMPLE BOX OF UNIPUSH- ON LOCK WASHERS, PLEASE SEND AN EMAIL TO [sales@unipushon.com](mailto:sales@unipushon.com)